



**Addendum No. 1**  
Page 1 of 4

**DATE: June 23, 2015**

Joliet Junior College  
1215 Houbolt Road  
Joliet, IL 60431

**TO:** Prospective Respondents  
**SUBJECT:** Addendum No. 1  
**PROJECT NAME:** Multipurpose Building Bid Release 1  
**JJC PROJECT NO.:** B15017

This Addendum forms a part of the Bidding and Contract Documents and modifies the original bidding document as posted on the JJC website. ***Acknowledge receipt of this addendum as instructed on the last page.*** FAILURE TO DO SO MAY SUBJECT BIDDER TO DISQUALIFICATION.

---

**The bid opening has been changed (extended) to July 7<sup>th</sup> at 9:00 AM**

Proposals received after this time will not be accepted.

Proposals shall be submitted on the forms provided on the College's website in a sealed envelope addressed to the Director of Business & Auxiliary Services, A-Building Room A3100, plainly marked, with the Bidders Name and address and the notation:

**BID: BID RELEASE 1- MULTIPURPOSE FACILITY: M-02A EXCAVATION, GRADING AND SITE UTILITIES**

OR

**BID: BID RELEASE 1- MULTIPURPOSE FACILITY: M-03A CONCRETE WORK**

**Questions Submitted:**

1. You are indicating that there is to be rigid insulation on the foundation walls and under the slab. However there are no details showing the extent. Will this be a 2" rigid extending 24" vertical on the walls and 24" horizontal under the slab at the perimeter? Please clarify.  
***There will be 2" thick rigid board extending 24" vertical on the interior face of all perimeter foundation walls. Insulation also occurs at the stoops per Detail 2 on S3.00.***

- You specify in the scope engineering and installation of temporary shoring of metal decking as required....As we are looking at drawings and your designs can you tell me if this will be required for the designed decks

***Temporary shoring of metal floor deck is not required***

- Item 15 tells us we are responsible for employing a licensed surveyor to perform our work , Item C general requirements line item 4 states provide all layout and required survey for all excavation work performed as part of this contract. Please verify that we are not to provide layout for the building excavator.

***The Excavation Contractor shall provide all layout required for their own work.***

- Item 29 require us to furnish and install interior equipment pads. There are none on the drawing, can you provide a quantity that we can include or clarify?

***See equipment pad schedule below:***

<b>Multipurpose</b>					
	Qty.	W	D	H	Vol (cubic feet)
Boiler	3	4.75	3.33	0.33	16
Expansion Tank/Pot Feeder/Chem Feed Equipment	1	10	4	0.33	13
Water Heater	1	3.33	4	0.33	4
Water Softener	1	2.5	8	0.33	7
TR-MP	1	7.35	6.25	0.29	13
TR-30	4	1.95	1.55	0.29	4
TR-75	1	2.75	1.95	0.29	2
TR-112	1	2.75	2.25	0.29	2

Total 61

- Item 20 requires us to include cost of approved admixtures and blankets. The admixtures is understandable. However could you be more specific or clarify what you are looking for with the blankets. The schedule has us pouring the slabs between 10-19-15 and 6-20-16 with building enclosed on 7-12-16 so would there be the necessary heat to pour these slabs? Or would they be poured "open deck" and need protection from initial pour and frost protection?

***The slabs will need protection for the initial pour and frost protection.***

**Clarifications:**

- M-02A Excavation, Grading & Site Utilities Contractor: Include the removal of (2) 24" dia. & (1) 30" dia. Concrete light pole bases along with a 2'-0" x 5'-0" x 42" deep concrete sign base. The light poles and sign will be removed by others.
- General Excavation Work: Do not include exporting material (excavation spoils) to the Romeoville Campus site.

## **Addendum No. 1**

**Page 3 of 4**

3. Add: Spec Section 013300- Submittal Procedures Part 2 (attached)
4. Add: Spec Section 072100- Thermal Insulation (attached)

### **Drawing Revisions:**

1. Sheet C2.1 Demolition Plan 01 – Layout1
2. Sheet C5.1 Proposed Site Geometry Plan 01-Layout
3. Sketch S1.11-001 Elevator Pit

**End of Addendum #1**



**Addendum No. 1**  
**Page 4 of 4**

**DATE: June 23, 2015**

**TO:** Prospective Respondents  
**SUBJECT:** Addendum No. 1  
**PROJECT NAME:** Multipurpose Building Bid Release 1  
**JJC PROJECT NO.:** B15017

This Addendum forms a part of the Bidding and Contract Documents and modifies the original bidding document as posted on the JJC website. ***Acknowledge receipt of this addendum as instructed on the last page.*** FAILURE TO DO SO MAY SUBJECT BIDDER TO DISQUALIFICATION.

---

---

Issued by:

Janice Reodus  
Director of Business & Auxiliary Services  
Joliet Junior College  
815.280.6643

I acknowledge receipt of Addendum #1

\_\_\_\_\_  
Company Name

\_\_\_\_\_  
Printed Name

\_\_\_\_\_  
Title

\_\_\_\_\_  
Signature

## **SECTION 01 33 00 - SUBMITTAL PROCEDURES**

### **PART 1 - GENERAL**

#### **1.1 RELATED DOCUMENTS**

- A. Drawings and general provisions of the Contract, including General and Supplementary Conditions and other Division 01 Specification Sections, apply to this Section.

#### **1.2 SUMMARY**

- A. Section includes requirements for the submittal schedule and administrative and procedural requirements for submitting Shop Drawings, Product Data, Samples, and other submittals.
- B. Related Requirements:
  - 1. Section 017823 "Operation and Maintenance Data" for submitting operation and maintenance manuals.
  - 2. Section 017839 "Project Record Documents" for submitting record Drawings, record Specifications, and record Product Data.
  - 3. Section 017900 "Demonstration and Training" for submitting video recordings of demonstration of equipment and training of Owner's personnel.

#### **1.3 DEFINITIONS**

- A. Action Submittals: Written and graphic information and physical samples that require Architect's and Construction Manager's responsive action. Action submittals are those submittals indicated in individual Specification Sections as "action submittals."
- B. Informational Submittals: Written and graphic information and physical samples that do not require Architect's and Construction Manager's responsive action. Submittals may be rejected for not complying with requirements. Informational submittals are those submittals indicated in individual Specification Sections as "informational submittals."
- C. File Transfer Protocol (FTP): Communications protocol that enables transfer of files to and from another computer over a network and that serves as the basis for standard Internet protocols. An FTP site is a portion of a network located outside of network firewalls within which internal and external users are able to access files.
- D. Portable Document Format (PDF): An open standard file format licensed by Adobe Systems used for representing documents in a device-independent and display resolution-independent fixed-layout document format.

#### **1.4 ACTION SUBMITTALS**

- A. Submittal Schedule: Submit a schedule of submittals, arranged in chronological order by dates required by construction schedule. Include time required for review, ordering, manufacturing, fabrication, and delivery when establishing dates. Include additional time

required for making corrections or revisions to submittals noted by Architect and Construction Manager and additional time for handling and reviewing submittals required by those corrections.

1. Coordinate submittal schedule with list of subcontracts, the schedule of values, and Contractor's construction schedule.
2. Initial Submittal: Submit concurrently with startup construction schedule. Include submittals required during the first 60 days of construction. List those submittals required to maintain orderly progress of the Work and those required early because of long lead time for manufacture or fabrication.
3. Final Submittal: Submit concurrently with the first complete submittal of Contractor's construction schedule.
  - a. Submit revised submittal schedule to reflect changes in current status and timing for submittals.
4. Format: Arrange the following information in a tabular format:
  - a. Scheduled date for first submittal.
  - b. Specification Section number and title.
  - c. Submittal category: Action; informational.
  - d. Name of subcontractor.
  - e. Description of the Work covered.
  - f. Scheduled date for Architect's and Construction Manager's final release or approval.
  - g. Scheduled date of fabrication.
  - h. Scheduled dates for purchasing.
  - i. Scheduled dates for installation.
  - j. Activity or event number.

#### 1.5 SUBMITTAL ADMINISTRATIVE REQUIREMENTS

- A. Architect's Digital Data Files: Electronic digital data files of the Contract Drawings will be provided by Architect for Contractor's use in preparing submittals.
  1. Architect will furnish Contractor one set of digital data drawing files of the Contract Drawings for use in preparing Shop Drawings and Project record drawings.
    - a. Architect makes no representations as to the accuracy or completeness of digital data drawing files as they relate to the Contract Drawings.
    - b. Digital Drawing Software Program: The Contract Drawings are available in Autodesk Revit 2014.
    - c. Contractor shall execute a data licensing agreement in the form of Agreement form acceptable to Owner and Architect.
    - d. .
    - e. The following digital data files will by furnished for each appropriate discipline:
      - 1) Floor plans.
      - 2) Reflected ceiling plans.
- B. Coordination: Coordinate preparation and processing of submittals with performance of construction activities.

1. Coordinate each submittal with fabrication, purchasing, testing, delivery, other submittals, and related activities that require sequential activity.
  2. Submit all submittal items required for each Specification Section concurrently unless partial submittals for portions of the Work are indicated on approved submittal schedule.
  3. Submit action submittals and informational submittals required by the same Specification Section as separate packages under separate transmittals.
  4. Coordinate transmittal of different types of submittals for related parts of the Work so processing will not be delayed because of need to review submittals concurrently for coordination.
    - a. Architect and Construction Manager reserve the right to withhold action on a submittal requiring coordination with other submittals until related submittals are received.
- C. Processing Time: Allow time for submittal review, including time for resubmittals, as follows. Time for review shall commence on Construction Manager's receipt of submittal. No extension of the Contract Time will be authorized because of failure to transmit submittals enough in advance of the Work to permit processing, including resubmittals.
1. Initial Review: Allow 15 days for initial review of each submittal. Allow additional time if coordination with subsequent submittals is required. Construction Manager will advise Contractor when a submittal being processed must be delayed for coordination.
  2. Intermediate Review: If intermediate submittal is necessary, process it in same manner as initial submittal.
  3. Resubmittal Review: Allow 15 days for review of each resubmittal.
  4. Sequential Review: Where sequential review of submittals by Architect's consultants, Owner, or other parties is indicated, allow 21 days for initial review of each submittal.
    - a. Architectural Precast Panels will require an extended review period, so multiple trades must coordinate type, location, and quantity of embedded junction boxes; and size and routing of embedded conduit.
  5. Concurrent Consultant Review: Where the Contract Documents indicate that submittals may be transmitted simultaneously to Architect and to Architect's consultants, allow 15 days for review of each submittal. Submittal will be returned to Construction Manager, through Architect, before being returned to Contractor.
- D. Electronic Submittals: Identify and incorporate information in each electronic submittal file as follows:
1. Assemble complete submittal package into a single indexed file incorporating submittal requirements of a single Specification Section and transmittal form with links enabling navigation to each item.
  2. Name file with submittal number or other unique identifier, including revision identifier.
    - a. File name shall use project identifier and Specification Section number followed by a decimal point and then a sequential number (e.g., LNHS-061000.01). Resubmittals shall include an alphabetic suffix after

another decimal point (e.g., LNHS-061000.01.A).

3. Provide means for insertion to permanently record Contractor's review and approval markings and action taken by Architect and Construction Manager.
  4. Transmittal Form for Electronic Submittals: Use software-generated form from electronic project management software electronic form acceptable to Owner, containing the following information:
    - a. Project name.
    - b. Date.
    - c. Name and address of Architect.
    - d. Name of Construction Manager.
    - e. Name of Contractor.
    - f. Name of firm or entity that prepared submittal.
    - g. Names of subcontractor, manufacturer, and supplier.
    - h. Category and type of submittal.
    - i. Submittal purpose and description.
    - j. Specification Section number and title.
    - k. Specification paragraph number or drawing designation and generic name for each of multiple items.
    - l. Drawing number and detail references, as appropriate.
    - m. Location(s) where product is to be installed, as appropriate.
    - n. Related physical samples submitted directly.
    - o. Indication of full or partial submittal.
    - p. Transmittal number[, numbered consecutively].
    - q. Submittal and transmittal distribution record.
    - r. Other necessary identification.
    - s. Remarks.
- E. Options: Identify options requiring selection by Architect.
- F. Deviations and Additional Information: On an attached separate sheet, prepared on Contractor's letterhead, record relevant information, requests for data, revisions other than those requested by Architect and Construction Manager on previous submittals, and deviations from requirements in the Contract Documents, including minor variations and limitations. Include same identification information as related submittal.
- G. Resubmittals: Make resubmittals in same form and number of copies as initial submittal.
  1. Note date and content of previous submittal.
  2. Note date and content of revision in label or title block and clearly indicate extent of revision.
  3. Resubmit submittals until they are marked with approval notation from Architect's and Construction Manager's action stamp.
- H. Distribution: Furnish copies of final submittals to manufacturers, subcontractors, suppliers, fabricators, installers, authorities having jurisdiction, and others as necessary for performance of construction activities. Show distribution on transmittal forms.
- I. Use for Construction: Retain complete copies of submittals on Project site. Use only final action submittals that are marked with approval notation from Architect's and Construction Manager's action stamp.



## PART 2 - PRODUCTS

### 2.1 SUBMITTAL PROCEDURES

- A. General Submittal Procedure Requirements: Prepare and submit submittals required by individual Specification Sections. Types of submittals are indicated in individual Specification Sections.
1. Post electronic submittals as PDF electronic files directly to Project Web site specifically established for Project.
    - a. Architect, through Construction Manager, will return annotated file. Annotate and retain one copy of file as an electronic Project record document file.
  2. Certificates and Certifications Submittals: Provide a statement that includes signature of entity responsible for preparing certification. Certificates and certifications shall be signed by an officer or other individual authorized to sign documents on behalf of that entity.
    - a. Provide a notarized statement on original paper copy certificates and certifications where indicated.
- B. Product Data: Collect information into a single submittal for each element of construction and type of product or equipment.
1. If information must be specially prepared for submittal because standard published data are not suitable for use, submit as Shop Drawings, not as Product Data.
  2. Mark each copy of each submittal to show which products and options are applicable.
  3. Include the following information, as applicable:
    - a. Manufacturer's catalog cuts.
    - b. Manufacturer's product specifications.
    - c. Standard color charts.
    - d. Statement of compliance with specified referenced standards.
    - e. Testing by recognized testing agency.
    - f. Application of testing agency labels and seals.
    - g. Notation of coordination requirements.
    - h. Availability and delivery time information.
  4. For equipment, include the following in addition to the above, as applicable:
    - a. Wiring diagrams showing factory-installed wiring.
    - b. Printed performance curves.
    - c. Operational range diagrams.
    - d. Clearances required to other construction, if not indicated on accompanying Shop Drawings.
  5. Submit Product Data before or concurrent with Samples.
  6. Submit Product Data in the following format:

- a. PDF electronic file.
- C. Shop Drawings: Prepare Project-specific information, drawn accurately to scale. Do not base Shop Drawings on reproductions of the Contract Documents or standard printed data[, unless submittal based on Architect's digital data drawing files is otherwise permitted].
1. Preparation: Fully illustrate requirements in the Contract Documents. Include the following information, as applicable:
    - a. Identification of products.
    - b. Schedules.
    - c. Compliance with specified standards.
    - d. Notation of coordination requirements.
    - e. Notation of dimensions established by field measurement.
    - f. Relationship and attachment to adjoining construction clearly indicated.
    - g. Seal and signature of professional engineer if specified.
  2. Sheet Size: Except for templates, patterns, and similar full-size drawings, submit Shop Drawings on sheets at least 8-1/2 by 11 inches, but no larger than 30 by 42 inches.
  3. Submit Shop Drawings in the following format:
    - a. PDF electronic file.
  4. BIM File Incorporation: Develop and incorporate Shop Drawing files into Building Information Model established for Project.
    - a. Prepare Shop Drawings in the following format: Same digital data software program, version, and operating system as the original Drawings.
- D. Samples: Submit Samples for review of kind, color, pattern, and texture for a check of these characteristics with other elements and for a comparison of these characteristics between submittal and actual component as delivered and installed.
1. Transmit Samples that contain multiple, related components such as accessories together in one submittal package.
  2. Identification: Attach label on unexposed side of Samples that includes the following:
    - a. Generic description of Sample.
    - b. Product name and name of manufacturer.
    - c. Sample source.
    - d. Number and title of applicable Specification Section.
    - e. Specification paragraph number and generic name of each item.
  3. For projects where electronic submittals are required, provide corresponding electronic submittal of Sample transmittal, digital image file illustrating Sample characteristics, and identification information for record.
  4. Disposition: Maintain sets of approved Samples at Project site, available for quality-control comparisons throughout the course of construction activity. Sample sets may be used to determine final acceptance of construction associated with each set.

- a. Samples not incorporated into the Work, or otherwise designated as Owner's property, are the property of Contractor.
- 5. Samples for Initial Selection: Submit manufacturer's color charts consisting of units or sections of units showing the full range of colors, textures, and patterns available.
  - a. Number of Samples: Submit one full set(s) of available choices where color, pattern, texture, or similar characteristics are required to be selected from manufacturer's product line. Architect, through Construction Manager, will return submittal with options selected.
- 6. Samples for Verification: Submit full-size units or Samples of size indicated, prepared from same material to be used for the Work, cured and finished in manner specified, and physically identical with material or product proposed for use, and that show full range of color and texture variations expected. Samples include, but are not limited to, the following: partial sections of manufactured or fabricated components; small cuts or containers of materials; complete units of repetitively used materials; swatches showing color, texture, and pattern; color range sets; and components used for independent testing and inspection.
  - a. Number of Samples: Submit at least three sets of Samples. Architect and Construction Manager will retain two Sample sets; remainder will be returned. Mark up and retain one returned Sample set as a project record sample.
    - 1) Submit a single Sample where assembly details, workmanship, fabrication techniques, connections, operation, and other similar characteristics are to be demonstrated.
    - 2) If variation in color, pattern, texture, or other characteristic is inherent in material or product represented by a Sample, submit at least [three] <Insert number> sets of paired units that show approximate limits of variations.
- E. Product Schedule: As required in individual Specification Sections, prepare a written summary indicating types of products required for the Work and their intended location. Include the following information in tabular form:
  - 1. Type of product. Include unique identifier for each product indicated in the Contract Documents or assigned by Contractor if none is indicated.
  - 2. Manufacturer and product name, and model number if applicable.
  - 3. Number and name of room or space.
  - 4. Location within room or space.
  - 5. Submit product schedule in the following format:
    - a. PDF electronic file.
- F. Closeout Submittals and Maintenance Material Submittals: Comply with requirements specified in Section 017700 "Closeout Procedures."
- G. Maintenance Data: Comply with requirements specified in Section 017823 "Operation and Maintenance Data."

- H. LEED Submittals: Comply with requirements specified in Section 018113.13 "Sustainable Design Requirements - LEED for New Construction and Major Renovations."
- I. Qualification Data: Prepare written information that demonstrates capabilities and experience of firm or person. Include lists of completed projects with project names and addresses, contact information of architects and owners, and other information specified.
- J. Welding Certificates: Prepare written certification that welding procedures and personnel comply with requirements in the Contract Documents. Submit record of Welding Procedure Specification and Procedure Qualification Record on AWS forms. Include names of firms and personnel certified.
- K. Installer Certificates: Submit written statements on manufacturer's letterhead certifying that Installer complies with requirements in the Contract Documents and, where required, is authorized by manufacturer for this specific Project.
- L. Manufacturer Certificates: Submit written statements on manufacturer's letterhead certifying that manufacturer complies with requirements in the Contract Documents. Include evidence of manufacturing experience where required.
- M. Product Certificates: Submit written statements on manufacturer's letterhead certifying that product complies with requirements in the Contract Documents.
- N. Material Certificates: Submit written statements on manufacturer's letterhead certifying that material complies with requirements in the Contract Documents.
- O. Material Test Reports: Submit reports written by a qualified testing agency, on testing agency's standard form, indicating and interpreting test results of material for compliance with requirements in the Contract Documents.
- P. Product Test Reports: Submit written reports indicating that current product produced by manufacturer complies with requirements in the Contract Documents. Base reports on evaluation of tests performed by manufacturer and witnessed by a qualified testing agency, or on comprehensive tests performed by a qualified testing agency.
- Q. Research Reports: Submit written evidence, from a model code organization acceptable to authorities having jurisdiction, that product complies with building code in effect for Project. Include the following information:
1. Name of evaluation organization.
  2. Date of evaluation.
  3. Time period when report is in effect.
  4. Product and manufacturers' names.
  5. Description of product.
  6. Test procedures and results.
  7. Limitations of use.
- R. Preconstruction Test Reports: Submit reports written by a qualified testing agency, on testing agency's standard form, indicating and interpreting results of tests performed before installation of product, for compliance with performance requirements in the Contract Documents.

- S. Compatibility Test Reports: Submit reports written by a qualified testing agency, on testing agency's standard form, indicating and interpreting results of compatibility tests performed before installation of product. Include written recommendations for primers and substrate preparation needed for adhesion.
- T. Field Test Reports: Submit written reports indicating and interpreting results of field tests performed either during installation of product or after product is installed in its final location, for compliance with requirements in the Contract Documents.
- U. Design Data: Prepare and submit written and graphic information, including, but not limited to, performance and design criteria, list of applicable codes and regulations, and calculations. Include list of assumptions and other performance and design criteria and a summary of loads. Include load diagrams if applicable. Provide name and version of software, if any, used for calculations. Include page numbers.

## 2.2 DELEGATED-DESIGN SERVICES

- A. Performance and Design Criteria: Where professional design services or certifications by a design professional are specifically required of Contractor by the Contract Documents, provide products and systems complying with specific performance and design criteria indicated.
  - 1. If criteria indicated are not sufficient to perform services or certification required, submit a written request for additional information to Architect.
- B. Delegated-Design Services Certification: In addition to Shop Drawings, Product Data, and other required submittals, submit digitally signed PDF electronic file paper copies of certificate, signed and sealed by the responsible design professional, for each product and system specifically assigned to Contractor to be designed or certified by a design professional.
  - 1. Indicate that products and systems comply with performance and design criteria in the Contract Documents. Include list of codes, loads, and other factors used in performing these services.
- C. BIM File Incorporation: Incorporate delegated-design drawing and data files into Building Information Model established for Project.
  - 1. Prepare delegated-design drawings in the following format: Same digital data software program, version, and operating system as the original Drawings.

## PART 3 - EXECUTION

### 3.1 CONTRACTOR'S REVIEW

- A. Action and Informational Submittals: Review each submittal and check for coordination with other Work of the Contract and for compliance with the Contract Documents. Note corrections and field dimensions. Mark with approval stamp before submitting to Architect and Construction Manager.

- B. Project Closeout and Maintenance Material Submittals: See requirements in Section 01 77 00 "Closeout Procedures."
- C. Approval Stamp: Stamp each submittal with a uniform, approval stamp. Include Project name and location, submittal number, Specification Section title and number, name of reviewer, date of Contractor's approval, and statement certifying that submittal has been reviewed, checked, and approved for compliance with the Contract Documents.

### 3.2 ARCHITECT'S AND CONSTRUCTION MANAGER'S ACTION

- A. Action Submittals: Architect and Construction Manager will review each submittal, make marks to indicate corrections or revisions required, and return it. Architect and Construction Manager will stamp each submittal with an action stamp and will mark stamp appropriately to indicate action.
- B. Informational Submittals: Architect and Construction Manager will review each submittal and will not return it, or will return it if it does not comply with requirements. Architect and Construction Manager will forward each submittal to appropriate party.
- C. Partial submittals prepared for a portion of the Work will be reviewed when use of partial submittals has received prior approval from Architect and Construction Manager.
- D. Incomplete submittals are unacceptable, will be considered nonresponsive, and will be returned for resubmittal without review.
- E. Submittals not required by the Contract Documents may be returned by the Architect without action.

**END OF SECTION 01 33 00**

## SECTION 07 21 00 - THERMAL INSULATION

### PART 1 - GENERAL

#### 1.1 RELATED DOCUMENTS

- A. Drawings and general provisions of the Contract, including General and Supplementary Conditions and Division 01 Specification Sections, apply to this Section.

#### 1.2 SUMMARY

- A. Section Includes:
  - 1. Foam-plastic board insulation.

#### 1.3 ACTION SUBMITTALS

- A. Product Data: For each type of product indicated.
- B. LEED Submittals:
  - 1. Product Data for Credit MR 4: For products having recycled content, documentation indicating percentages by weight of postconsumer and preconsumer recycled content. Include statement indicating cost for each product having recycled content.

#### 1.4 QUALITY ASSURANCE

- A. Surface-Burning Characteristics: As determined by testing identical products according to ASTM E 84 by a qualified testing agency. Identify products with appropriate markings of applicable testing agency.

#### 1.5 DELIVERY, STORAGE, AND HANDLING

- A. Protect insulation materials from physical damage and from deterioration due to moisture, soiling, and other sources. Store inside and in a dry location. Comply with manufacturer's written instructions for handling, storing, and protecting during installation.
- B. Protect foam-plastic board insulation as follows:
  - 1. Do not expose to sunlight except to necessary extent for period of installation and concealment.
  - 2. Protect against ignition at all times. Do not deliver foam-plastic board materials to Project site before installation time.
  - 3. Quickly complete installation and concealment of foam-plastic board insulation in each area of construction.

## PART 2 - PRODUCTS

### 2.1 FOAM-PLASTIC BOARD INSULATION

- A. Extruded-Polystyrene Board Insulation: ASTM C 578, of type and minimum compressive strength indicated below, with maximum flame-spread and smoke-developed indexes of 75 and 450, respectively, per ASTM E 84.
  - 1. Manufacturers: Subject to compliance with requirements, provide products by one of the following:
    - a. DiversiFoam Products.
    - b. Dow Chemical Company (The).
    - c. Owens Corning.
    - d. Pactiv Building Products.
  - 2. Type IV, 25 psi.
- B. Adhesive for Bonding Insulation: Product with demonstrated capability to bond insulation securely to substrates without damaging insulation and substrates.

## PART 3 - EXECUTION

### 3.1 PREPARATION

- A. Clean substrates of substances that are harmful to insulation or vapor retarders, including removing projections capable of puncturing vapor retarders, or that interfere with insulation attachment.

### 3.2 INSTALLATION, GENERAL

- A. Comply with insulation manufacturer's written instructions applicable to products and applications indicated.
- B. Install insulation that is undamaged, dry, and unsoiled and that has not been left exposed to ice, rain, or snow at any time.
- C. Extend insulation to envelop entire area to be insulated. Cut and fit tightly around obstructions and fill voids with insulation. Remove projections that interfere with placement.
- D. Provide sizes to fit applications indicated and selected from manufacturer's standard thicknesses, widths, and lengths. Apply single layer of insulation units to produce thickness indicated unless multiple layers are otherwise shown or required to make up total thickness.

### 3.3 INSTALLATION OF BELOW-GRADE INSULATION



- A. On vertical surfaces, set insulation units using manufacturer's recommended adhesive according to manufacturer's written instructions.
  - 1. If not otherwise indicated, extend insulation a minimum of 24 inches below exterior grade line.
- B. On horizontal surfaces, loosely lay insulation units according to manufacturer's written instructions. Stagger end joints and tightly abut insulation units.
  - 1. If not otherwise indicated, extend insulation a minimum of 24 inches in from exterior walls.

### 3.4 PROTECTION

- A. Protect installed insulation from damage due to harmful weather exposures, physical abuse, and other causes. Provide temporary coverings or enclosures where insulation is subject to abuse and cannot be concealed and protected by permanent construction immediately after installation.

### 3.5 INSULATION SCHEDULE

- A. Type IV extruded-polystyrene board insulation: For use at perimeter foundation walls.

**END OF SECTION 07 21 00**



ARCHITECT OF RECORD  
 DEMONICA KEMPER ARCHITECTS  
 125 N. HALSTED STREET, SUITE 301  
 CHICAGO, IL 60661  
 P: 312.496.0000

STRUCTURAL AND MEPFP ENGINEERING  
 KJWW ENGINEERING CONSULTANTS  
 1100 WARRENVILLE RD. SUITE  
 400W NAPERVILLE, IL 60563  
 P: 630.527.2320

CIVIL ENGINEERING  
 RUETTIGER, TONELLI & ASSOC., INC.  
 129 CAPISTA DRIVE  
 SHOREWOOD, IL 60404  
 P: 815.744.6600

**JOLIET JUNIOR COLLEGE  
 MULTIPURPOSE FACILITY**  
 1215 HOUBOLT ROAD, IL 60431  
 DKA PROJECT NO: 14-004

KEY PLAN:

SHEET STATUS: 06/01/15  
**BID PACKAGE 1  
 ISSUED FOR BID**

NO.	DESCRIPTION	DATE
1	BP-1 ADDENDUM 1	6-23-2015

SHEET TITLE:  
**DEMOLITION PLAN  
 (1 OF 2)**

SHEET NUMBER:

**C2.1**

GRAPHIC SCALE  
 1 inch = 20 ft.

**LEGEND**

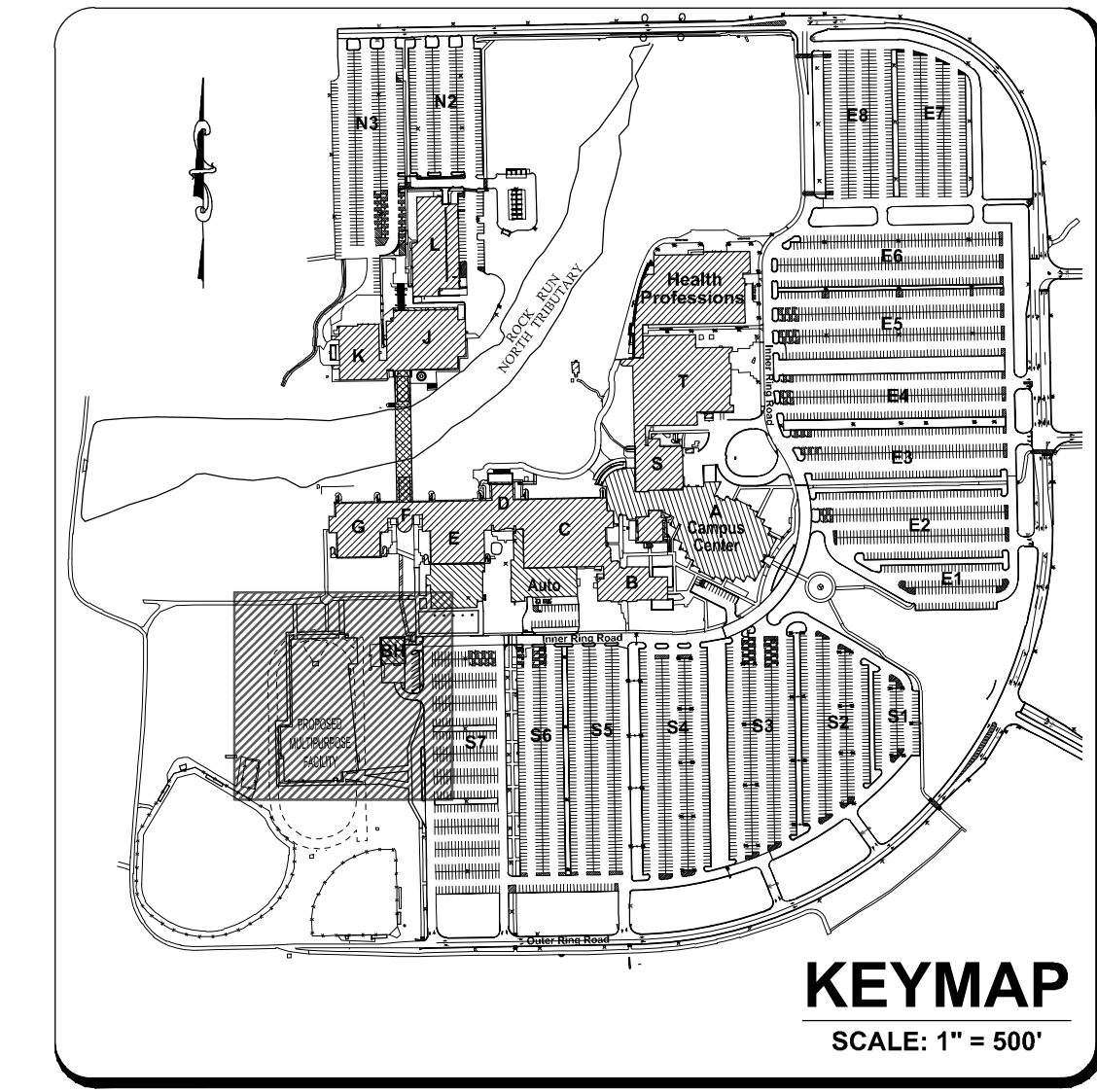
XXXXXX	EXISTING ELEVATION
---	EXISTING CONTOUR
T/F	TOP OF FOUNDATION
FF	FINISHED FLOOR
CMP	CORRUGATED METAL PIPE
FES	FLARED END SECTION
T/WALL	TOP OF WALL
FL	FLOW LINE
RCP	REINFORCED CONCRETE PIPE
CIP	CORRUGATED PLASTIC PIPE
PVC	POLYVINYL CHLORIDE PIPE
U	UTILITY POLE
GA	GUY ANCHOR
UE	UNDERGROUND ELECTRIC LINES
OE	OVERHEAD ELECTRIC LINES
SL	STREET LIGHT
VF	VALVE & VALVE
FW	FIRE HYDRANT
SI	STORM SEWER INLET
SM	STORM SEWER MANHOLE
SS	STORM SEWER LINES
CS	CABLE TV HANDHOLE
CT	CABLE TV FEEDSTOCK
UC	UNDERGROUND CABLE TV LINES
TP	TELEPHONE FEEDSTOCK
TC	TELEPHONE CONTROL MANHOLE
UL	UNDERGROUND TELEPHONE LINES
UG	UNDERGROUND GAS LINES
SC	SIGNAL CONTROL BOX
SP	SIGNAL PEDESTAL
ET	ENVIROGREEN TREE W/ DIAMETER
ET	EXISTING TREE W/ DIAMETER
BW	BUSH W/ DIAMETER
TS	TRAFFIC SIGNAL
TH	TRAFFIC SIGNAL HANDHOLE
GM	GAS METER
SM	SANITARY SEWER MANHOLE
SS	"SUSPECTED" SANITARY SEWER LINES
Q	QUADRANT
EB	ELECTRIC BOX
EH	ELECTRIC HANDHOLE
EO	ELECTRIC OUTLET
ET	ELECTRIC TRANSFORMER
GV	GAS VALVE BOX
LL	LANDSCAPE LIGHT
LB	LANDSCAPE LIGHT
WP	HAND WATER PUMP
EM	ELECTRIC METER
UL	"SUSPECTED" UNDERGROUND WATER LINES
RF	ROPE POST
ICV	IRRIGATION CONTROL VALVE
CO	CLEAN OUT
TH	TELEPHONE HANDHOLE
TH	TELEPHONE HANDHOLE
TR	TREE REMOVAL
XXXXXX	EXISTING ITEM TO BE REMOVED AS NOTED
XXXXXX	EXISTING ITEM TO BE REMOVED AS NOTED

**Call Before You Dig**  
**JULIE**  
 ILLINOIS ONE-CALL SYSTEM  
 CONTACT JULIE AT 815-600-992-0123  
 48 Hours (2 Working Days) BEFORE YOU DIG.  
 Include the following:  
 County, City/Township, Section & 1/2, Section No.

**SITE BENCHMARK 1:**  
 HEAD BOLT ON THE HYDRANT THAT ARROW POINTS TO, LOCATED APPROXIMATELY 1/2 MI SOUTH OF MAIN CAMPUS ENTRY ON HOUBOLT ROAD.  
 ELEVATION: 667.75 (NAVD 88)

**SITE BENCHMARK 2:**  
 CUT CROSS TOP OF CONCRETE PAD BY ELECTRIC PANELS LOCATED TO THE EAST OF THE BASEBALL FIELD PRESS BOX.  
 ELEVATION = 364.18 (NAVD 88)

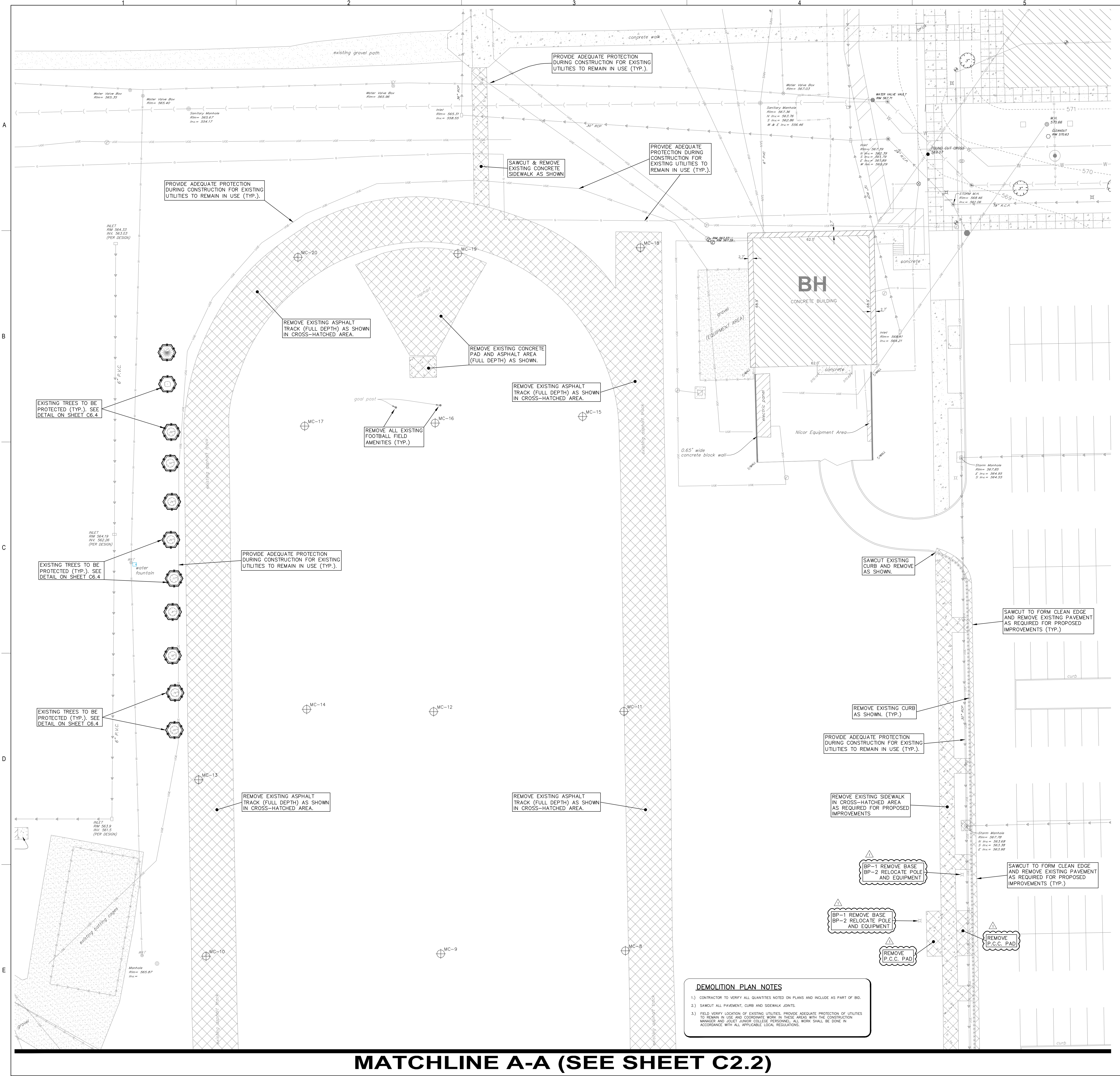
FIELD VERIFY BENCHMARK WITH BENCHMARK LIST.



**RT & A**  
**Ruettiger, Tonelli & Associates, Inc.**  
 Surveyors • Engineers • Planners • Landscape Architects • G.I.S. Consultants  
 129 CAPISTA DRIVE • SHOREWOOD, ILLINOIS 60404  
 PH: 815.744.6600 FAX: 815.744.0101  
 Website: www.ruettiger-tonelli.com

LATEST R.T. & A. REVISION: 6-23-2015  
 FIELD BOOK & PAGE: JJC

**R.T. & A. Dwg. No.: 401-0058-C1**



**DEMOLITION PLAN NOTES**

- CONTRACTOR TO VERIFY ALL QUANTITIES NOTED ON PLANS AND INCLUDE AS PART OF BID.
- SAWCUT ALL PAVEMENT, CURB AND SIDEWALK JOINTS.
- FIELD VERIFY LOCATION OF EXISTING UTILITIES. PROVIDE ADEQUATE PROTECTION OF UTILITIES TO REMAIN IN USE AND COORDINATE WORK IN THESE AREAS WITH THE CONSTRUCTION MANAGER AND JOLIET JUNIOR COLLEGE PERSONNEL. ALL WORK SHALL BE DONE IN ACCORDANCE WITH ALL APPLICABLE LOCAL REGULATIONS.

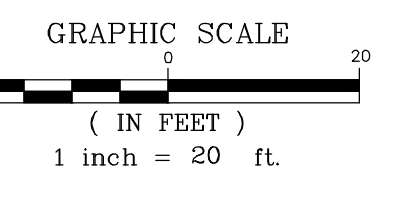


ARCHITECT OF RECORD  
 DEMONICA KEMPER ARCHITECTS  
 125 N. HALSTED STREET, SUITE 301  
 CHICAGO, IL 60661  
 P: 312.496.0000

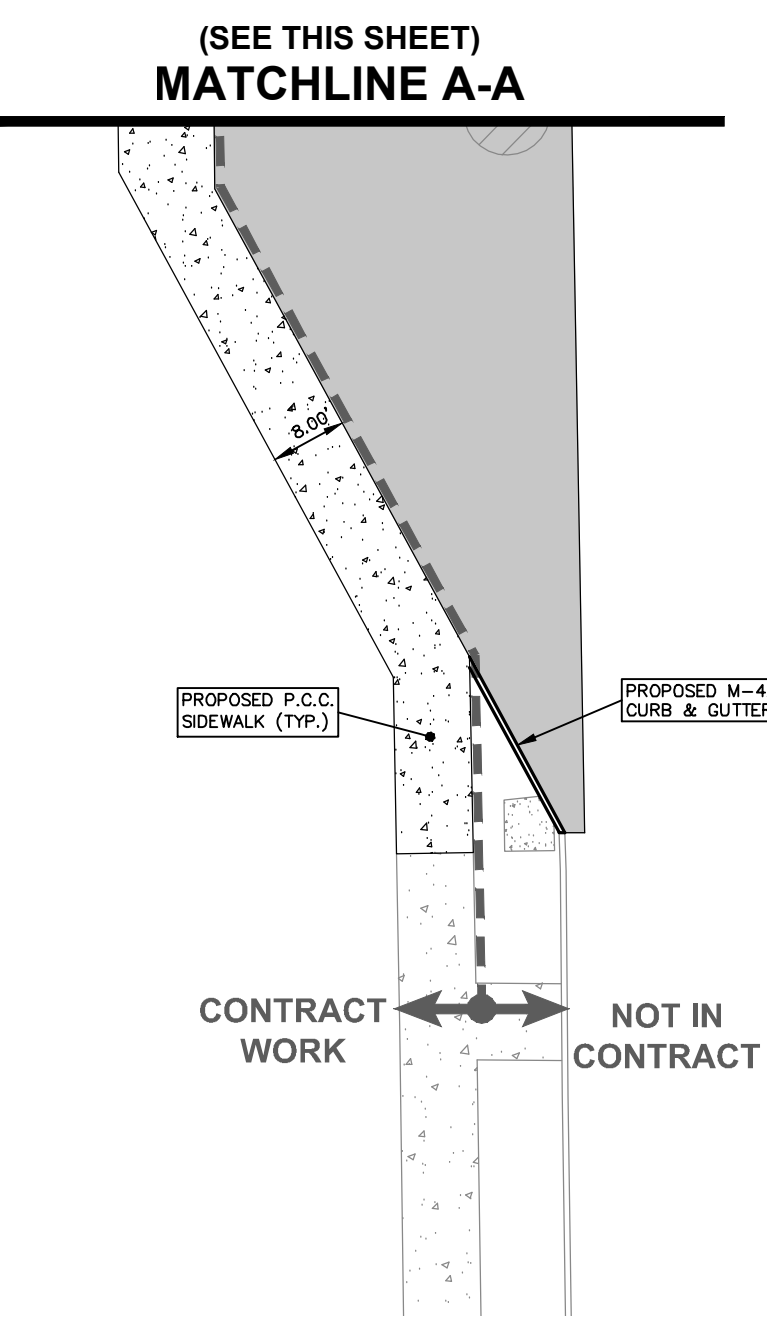
STRUCTURAL AND MEPFP ENGINEERING  
 KJWW ENGINEERING CONSULTANTS  
 1100 WARRENVILLE RD. SUITE  
 400W NAPERVILLE, IL 60563  
 P: 630.527.2320

CIVIL ENGINEERING  
 RUETTIGER, TONELLI & ASSOC., INC.  
 129 CAPISTA DRIVE  
 SHOREWOOD, IL 60404  
 P: 815.744.6600

**JOLIET JUNIOR COLLEGE  
 MULTIPURPOSE FACILITY**  
 1215 HOUBOLT ROAD, IL 60431  
 DKA PROJECT NO: 14-004



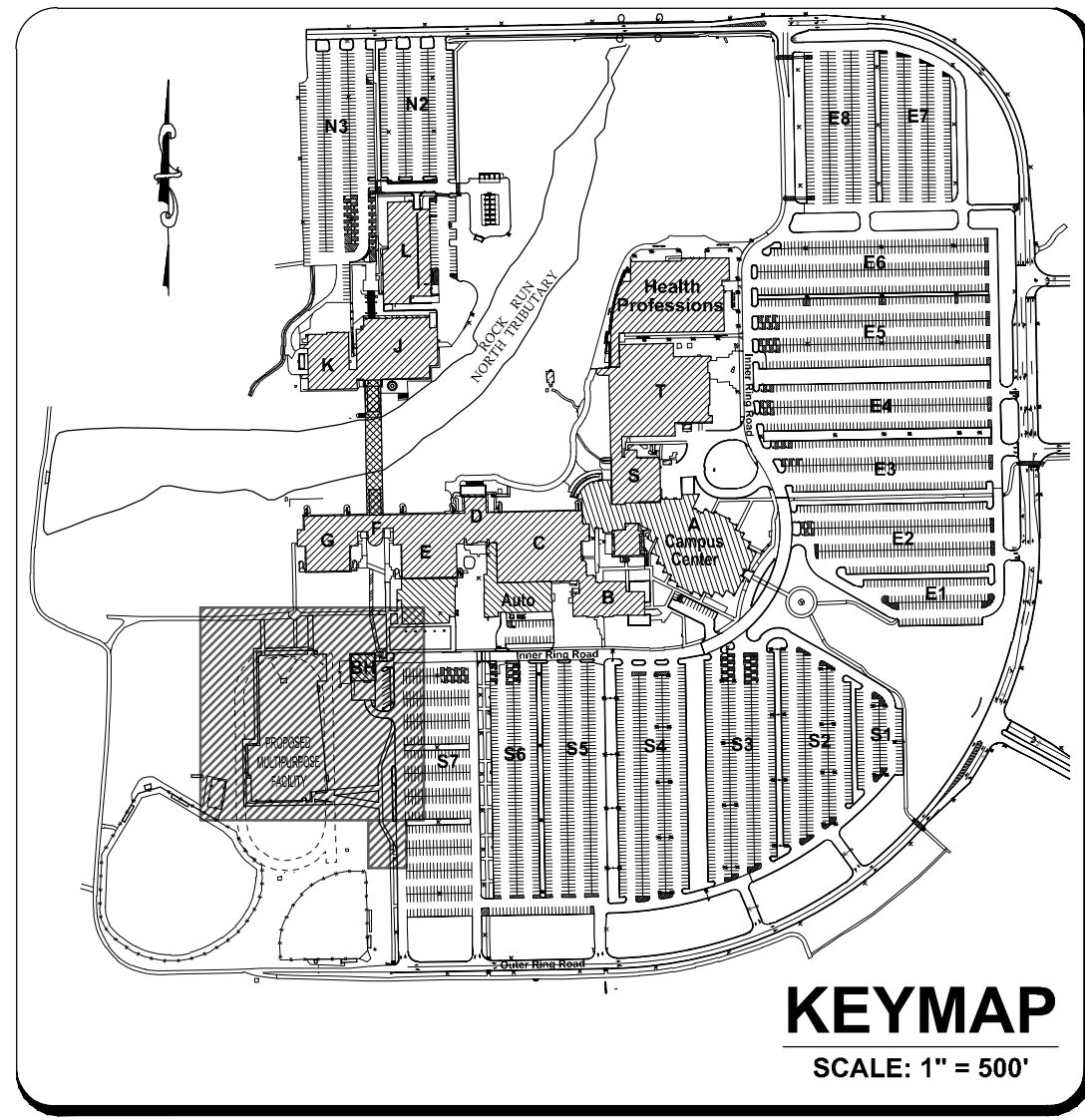
LEGEND	
	EXISTING CURB
	PROPOSED CURB
	EXISTING PAVEMENT AREA
	PROPOSED STANDARD DUTY PAVEMENT AREA
	ARC DISTANCE
	BACK OF CURB DISTANCE
	FACE OF CURB DISTANCE
	BACK TO BACK OF CURB DISTANCE
	EDGE TO EDGE OF PAVEMENT DISTANCE
	EDGE OF PAVEMENT DISTANCE
	PROPOSED SIGN
	PROPOSED LIGHT BASE



**SITE BENCHMARK 1:**  
 HEAD BOLT ON FIRE HYDRANT THAT ARROW POINTS TO LOCATED APPROXIMATELY 70' SOUTH OF MAIN CAMPUS EXIT ROAD ON/OFF HOUBOLT ROAD.  
 ELEVATION: 657.75 (NAVD 88)

**SITE BENCHMARK 2:**  
 CUT CROSS TOP OF CONCRETE PAD BY ELECTRIC PANELS LOCATED TO THE EAST OF THE BASEBALL FIELD PRESS BOX.  
 ELEVATION = 364.18 (NAVD 88)

FIELD VERIFY BENCHMARK WITH BENCHMARK LIST.



**RT & A** Ruettiger, Tonelli & Associates, Inc.  
 Surveyors • Engineers • Planners • Landscape Architects • GIS Consultants  
 129 CAPISTA DRIVE • SHOREWOOD, ILLINOIS 60404  
 PH: 815.744.6600 FAX: 815.744.0101  
 website: www.ruettiger-tonelli.com

LATEST R.T. & A. REVISION: 6-23-2015  
 FIELD BOOK & PAGE: JJC

**R.T. & A. Dwg. No.: 401-0058-C1**

KEY PLAN:

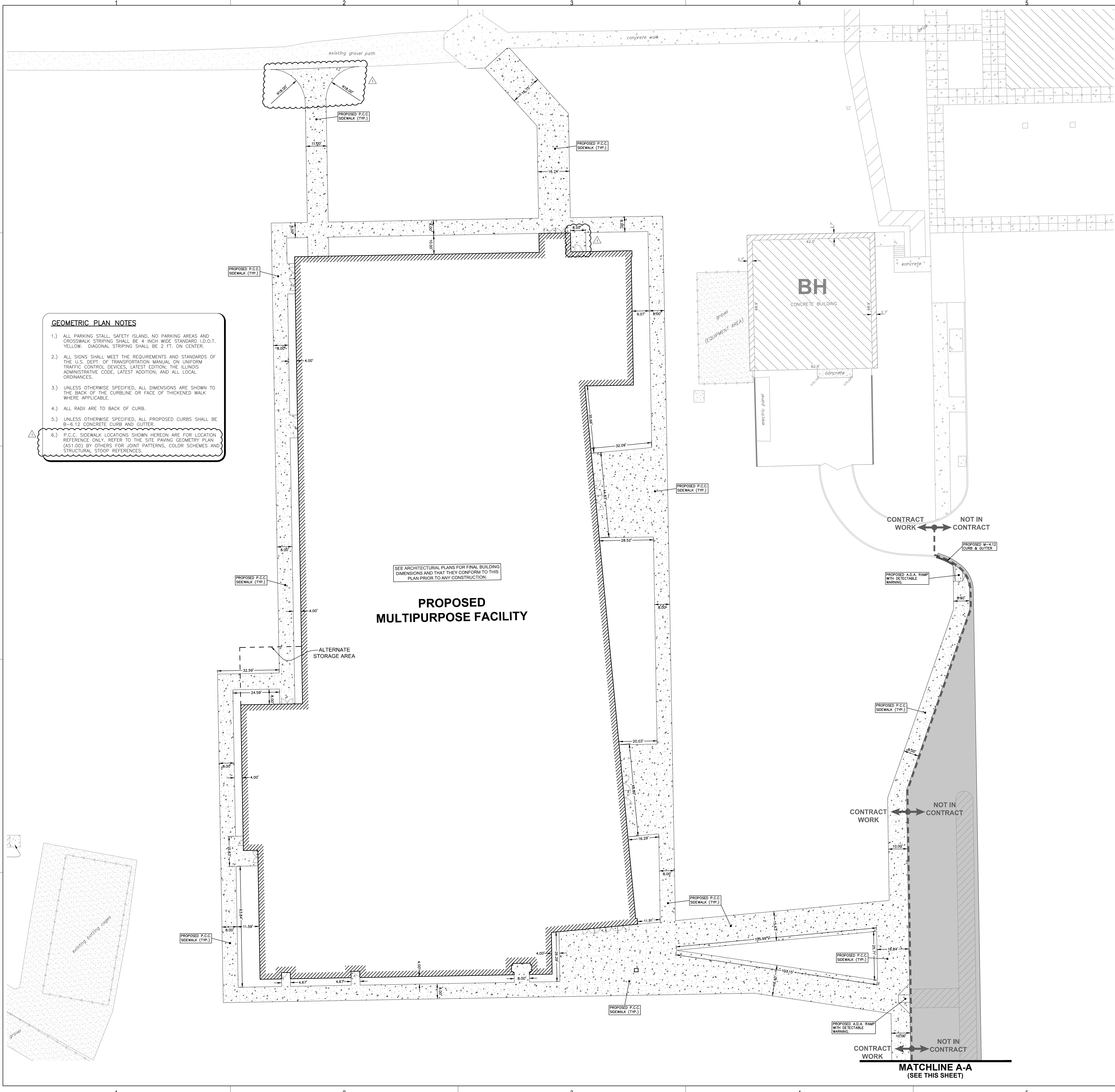
SHEET STATUS: 06/01/15  
**BID PACKAGE 1  
 ISSUED FOR BID**

NO.	DESCRIPTION	DATE
1	BP-1 ADDENDUM 1	6-23-2015

SHEET TITLE:  
**PROPOSED  
 GEOMETRY PLAN**

SHEET NUMBER:

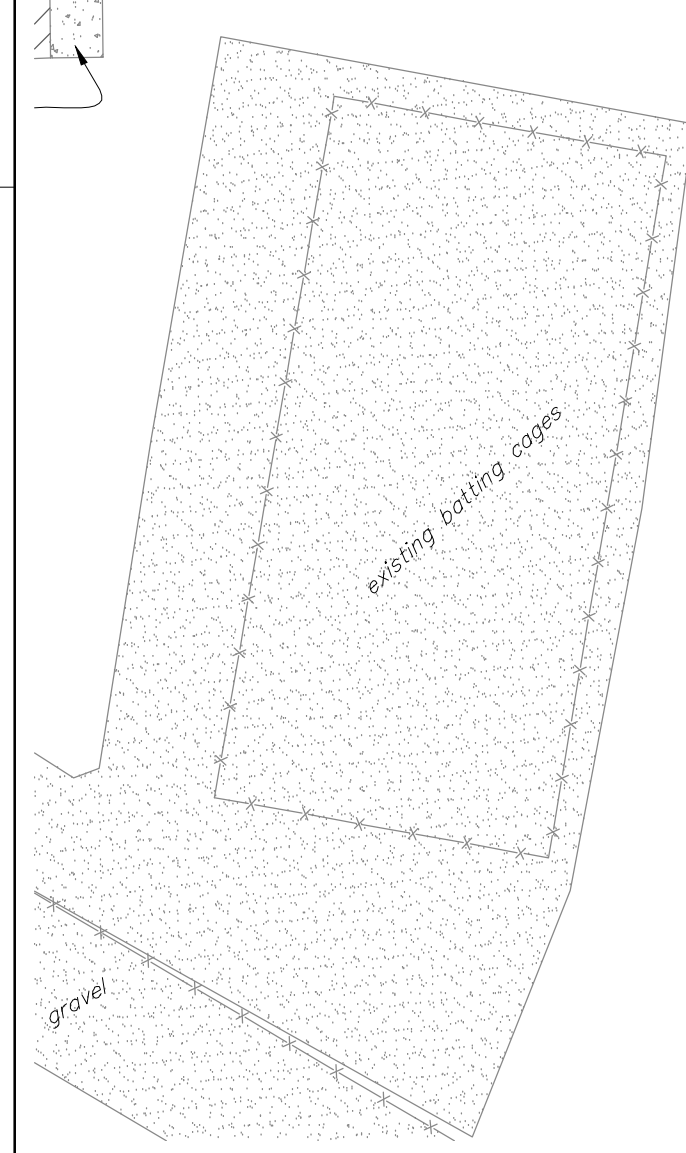
**C5.1**



- GEOMETRIC PLAN NOTES**
- 1.) ALL PARKING STALL, SAFETY ISLAND, NO PARKING AREAS AND CROSSWALK STRIPING SHALL BE 4 INCH WIDE STANDARD I.D.O.T. YELLOW DIAGONAL STRIPING SHALL BE 2 FT. ON CENTER.
  - 2.) ALL SIGNS SHALL MEET THE REQUIREMENTS AND STANDARDS OF THE U.S. DEPT. OF TRANSPORTATION MANUAL ON UNIFORM TRAFFIC CONTROL DEVICES, LATEST EDITION; THE ILLINOIS ADMINISTRATIVE CODE, LATEST ADDITION; AND ALL LOCAL ORDINANCES.
  - 3.) UNLESS OTHERWISE SPECIFIED, ALL DIMENSIONS ARE SHOWN TO THE BACK OF THE CURBLINE OR FACE OF THICKENED WALK WHERE APPLICABLE.
  - 4.) ALL RADII ARE TO BACK OF CURB.
  - 5.) UNLESS OTHERWISE SPECIFIED, ALL PROPOSED CURBS SHALL BE 6"-8.12 CONCRETE CURB AND GUTTER.
  - 6.) P.C.C. SIDEWALK LOCATIONS SHOWN HEREON ARE FOR LOCATION REFERENCE ONLY. REFER TO THE SITE PAVING GEOMETRY PLAN (AS1.00) BY OTHERS FOR JOINT PATTERNS, COLOR SCHEMES AND STRUCTURAL STOOD REFERENCES.

SEE ARCHITECTURAL PLANS FOR FINAL BUILDING DIMENSIONS AND THAT THEY CONFORM TO THIS PLAN PRIOR TO ANY CONSTRUCTION.

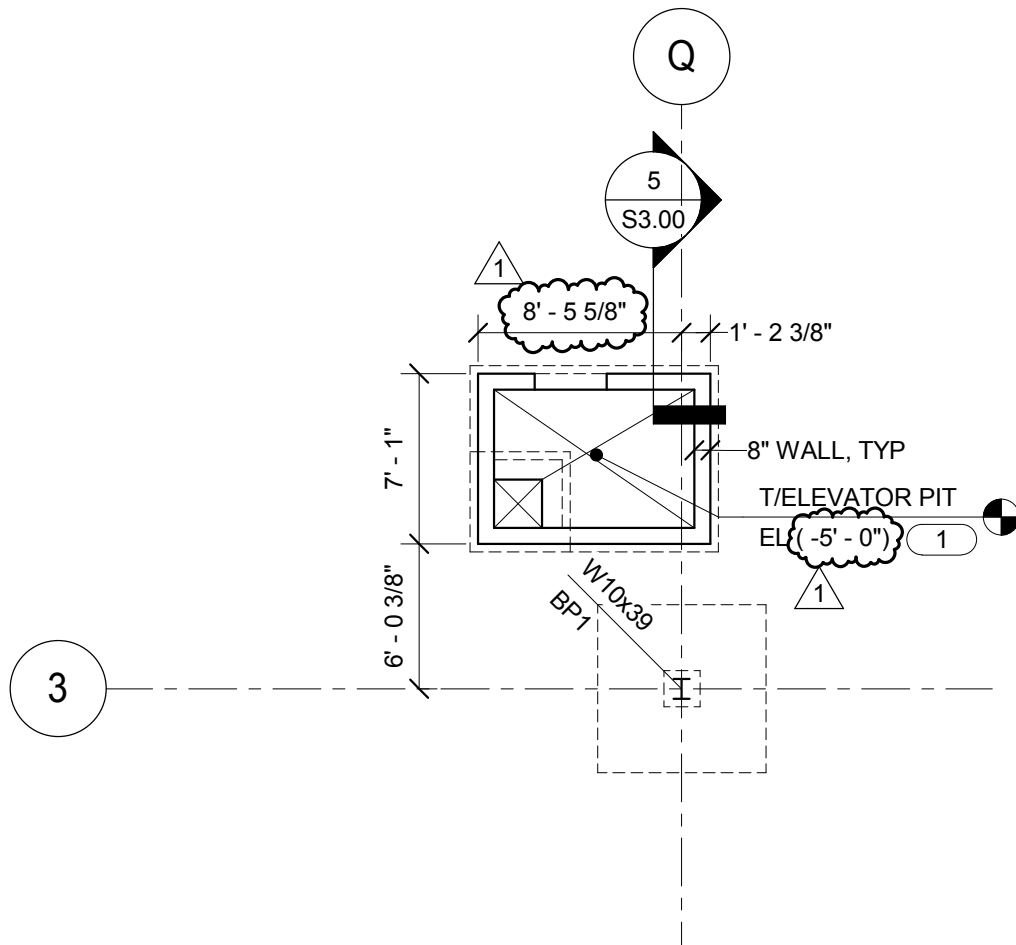
**PROPOSED  
 MULTIPURPOSE FACILITY**



A  
B  
C  
D  
E

1 2 3 4 5 6

1 2 3 4 5 6



1

# FOUNDATION PLAN - AREA 1

1/8" = 1'-0"

KEYNOTES:

- 1 COORDINATE PIT DEPTH WITH ELEVATOR MANUFACTURER.



JOLIET JUNIOR COLLEGE  
MULTIPURPOSE FACILITY

PROJECT: 14-004  
DATE: JUNE 23, 2015  
REF SHEET: S1.11

BP1 - ADDENDUM 1

S1.11-001